



# Secure IE

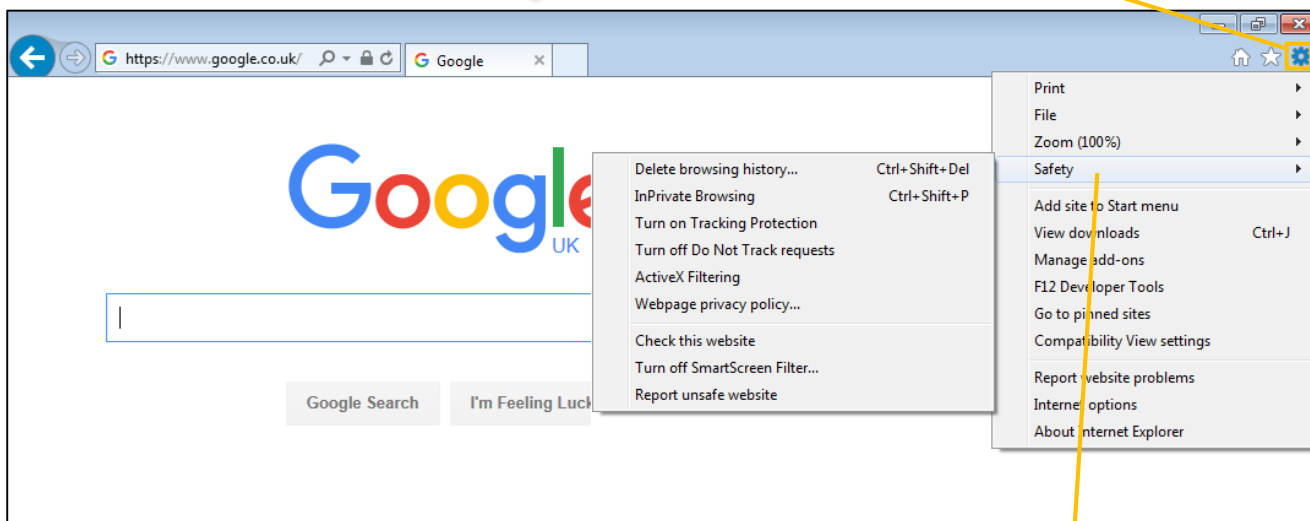


Note: all screenshots taken from the .com site. Mobile versions may have differing features.

## Accessing Safety Options

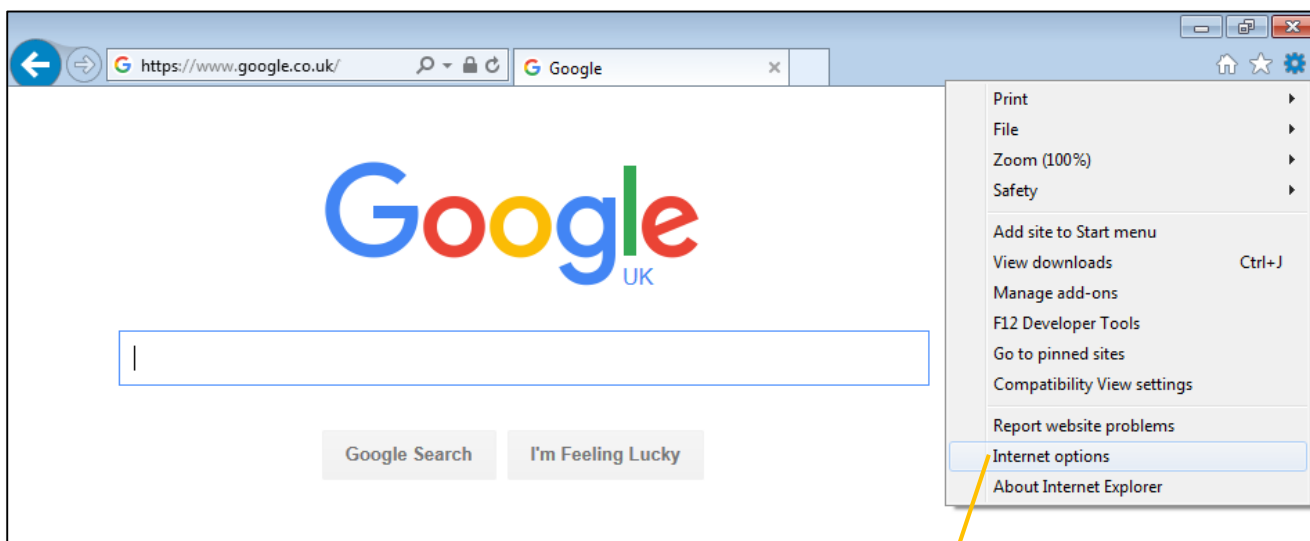


Click to access menu



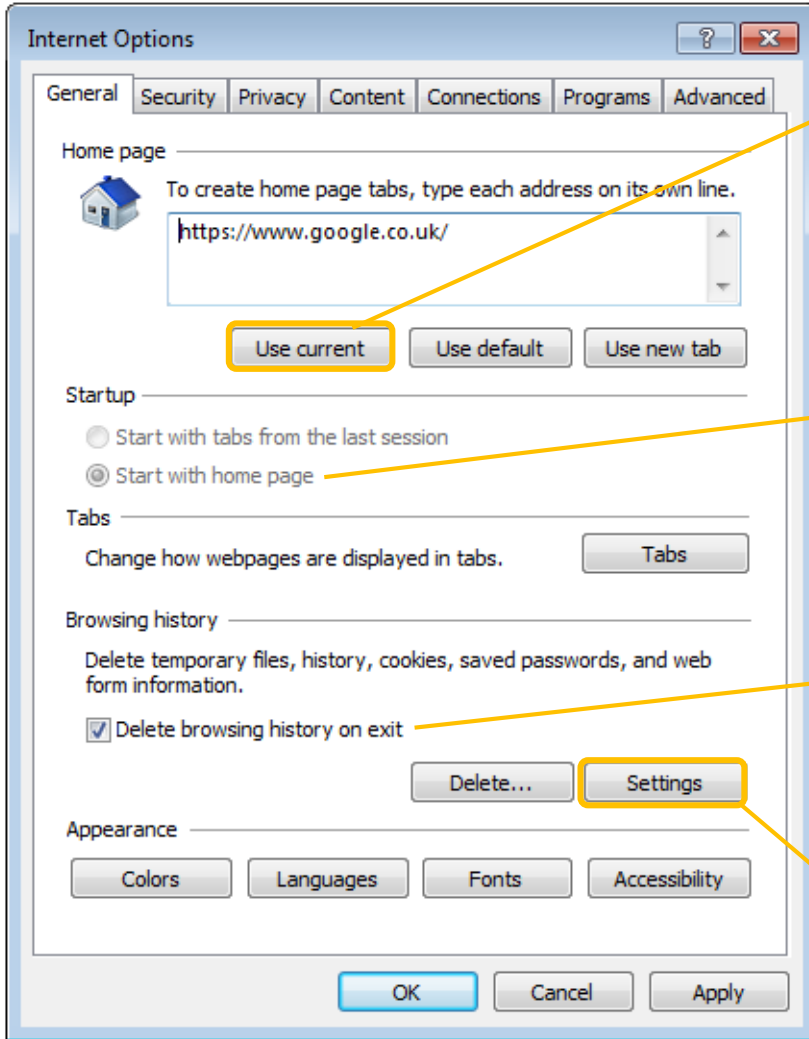
Then select 'Safety' for a quick list of popular options.

## Accessing settings



Now click 'Internet options' to access the main security settings area.

# Internet Options - General



Select a 'safe' home page that does not imply any specific browsing habits.

1

Set IE to start with the home page.

2

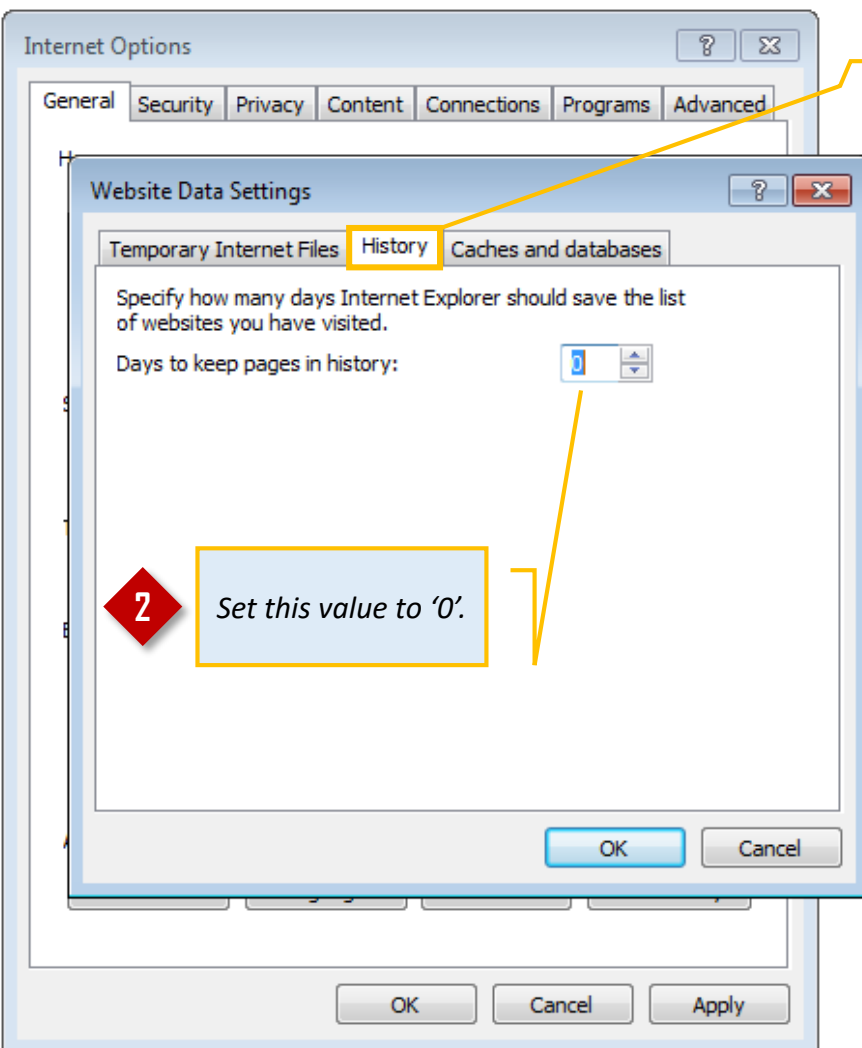
Set to delete browsing history on exit.

3

Now click 'Settings'.

4

# Internet Options – General - Settings



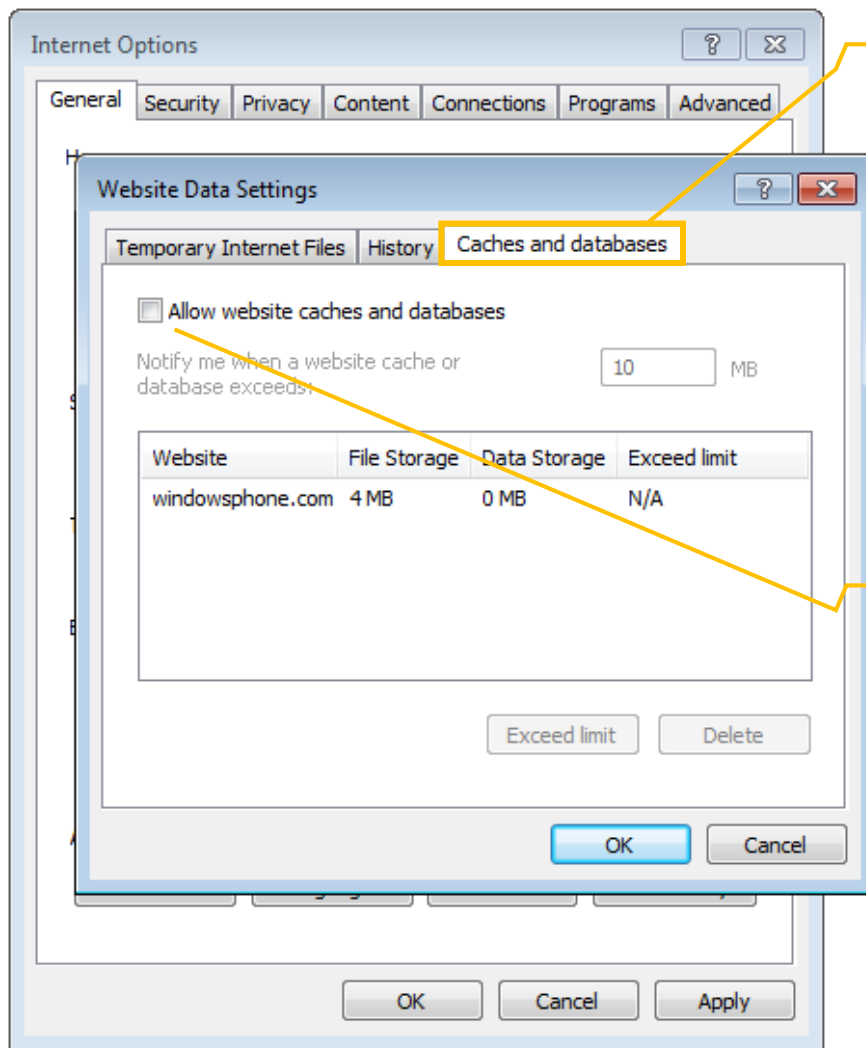
Select the 'History' tab...

1

2

Set this value to '0'.

# Internet Options – General - Settings



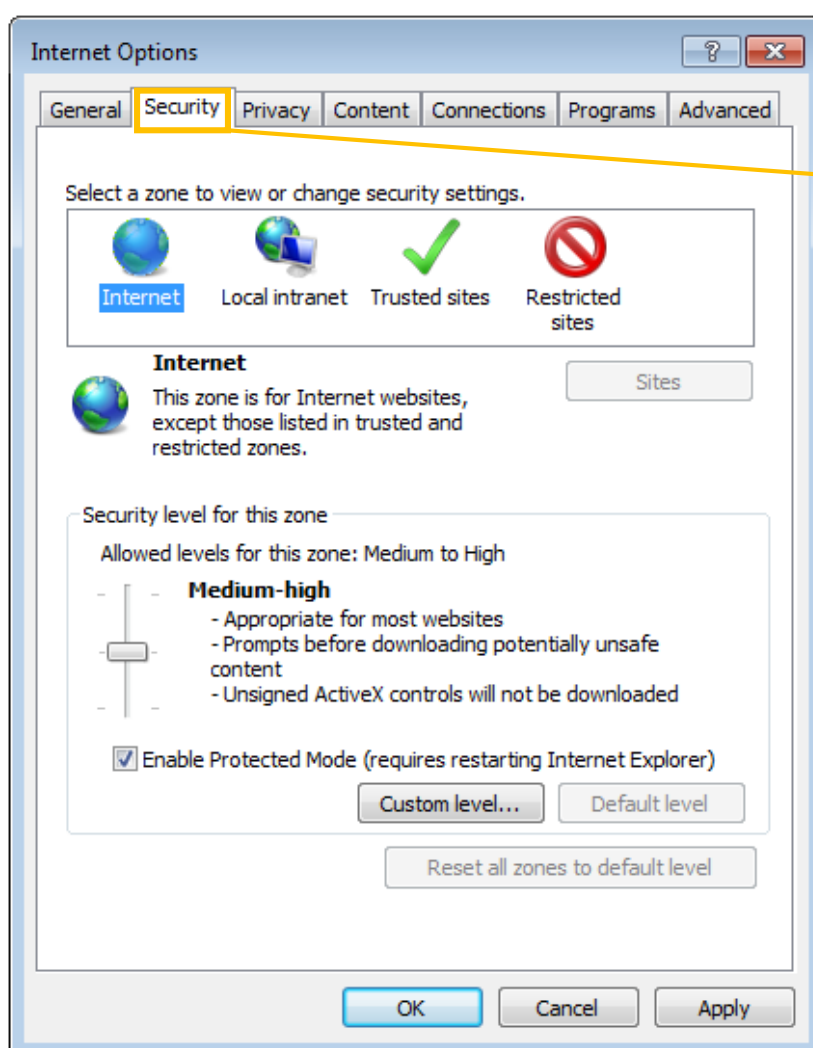
Select the 'Caches and databases' tab...

1

Deselect this option if desired.

2

# Internet Options – Security



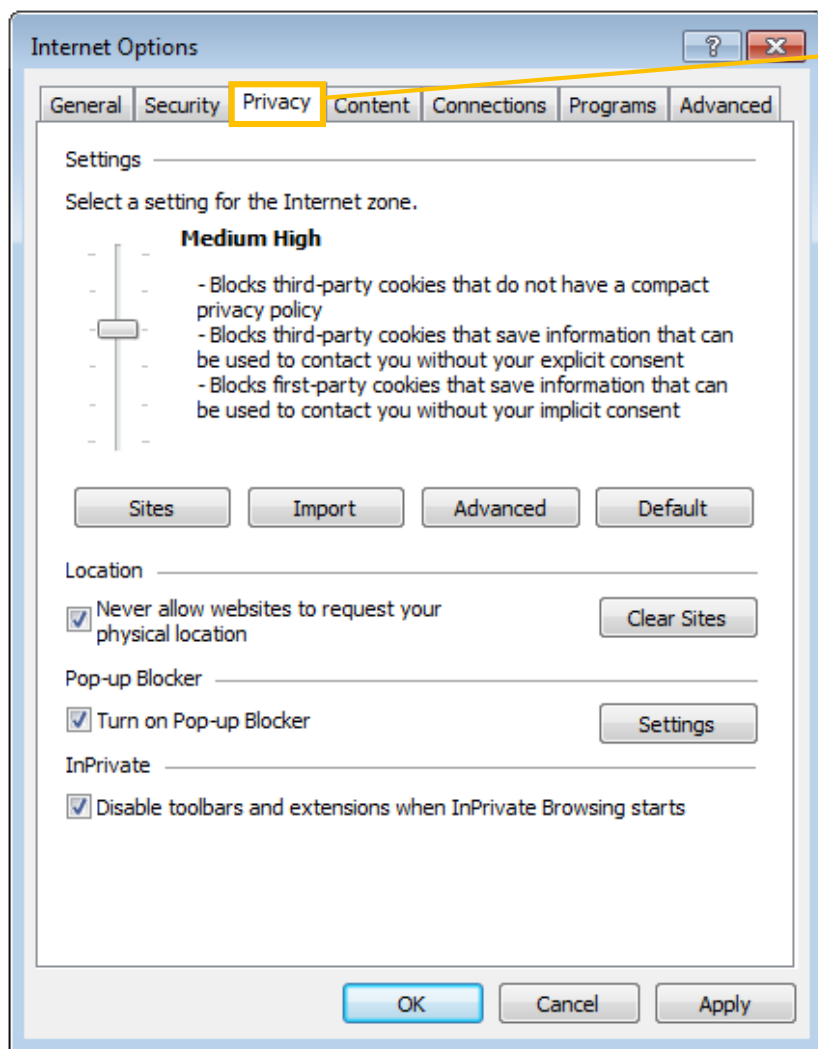
Select the 'Security' tab...

1

Choose the security level that suits your role.

2

# Internet Options – Privacy

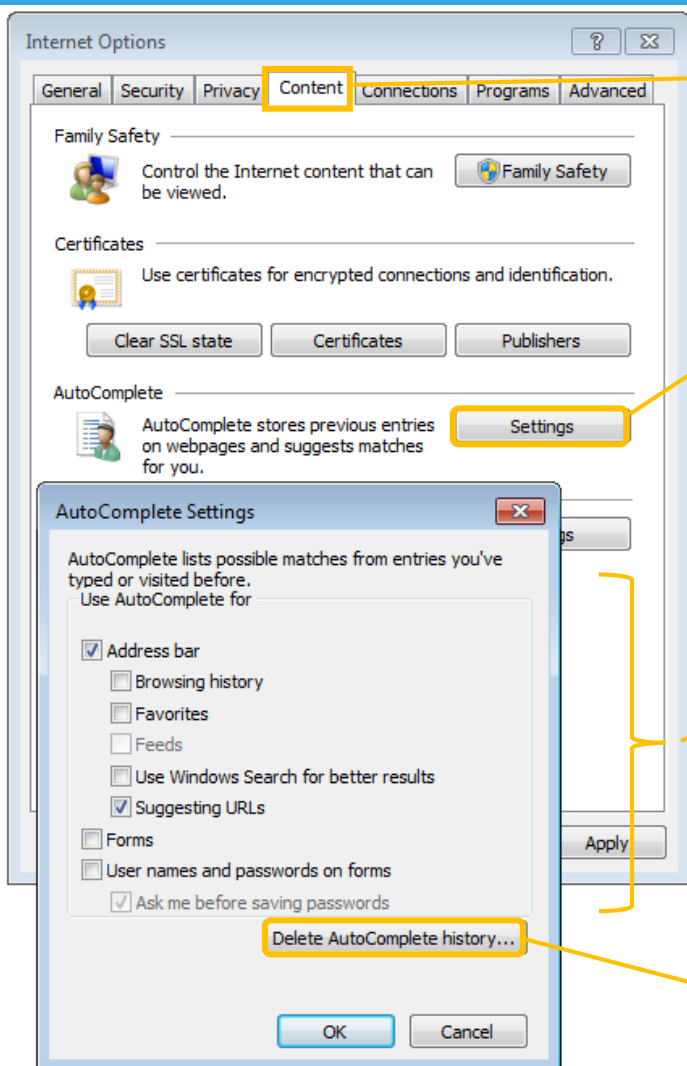


Select the 'Privacy' tab... 1

Choose the cookie setting that suits your role. 2

Select all three settings as shown (recommended). 3

# Internet Options – Content



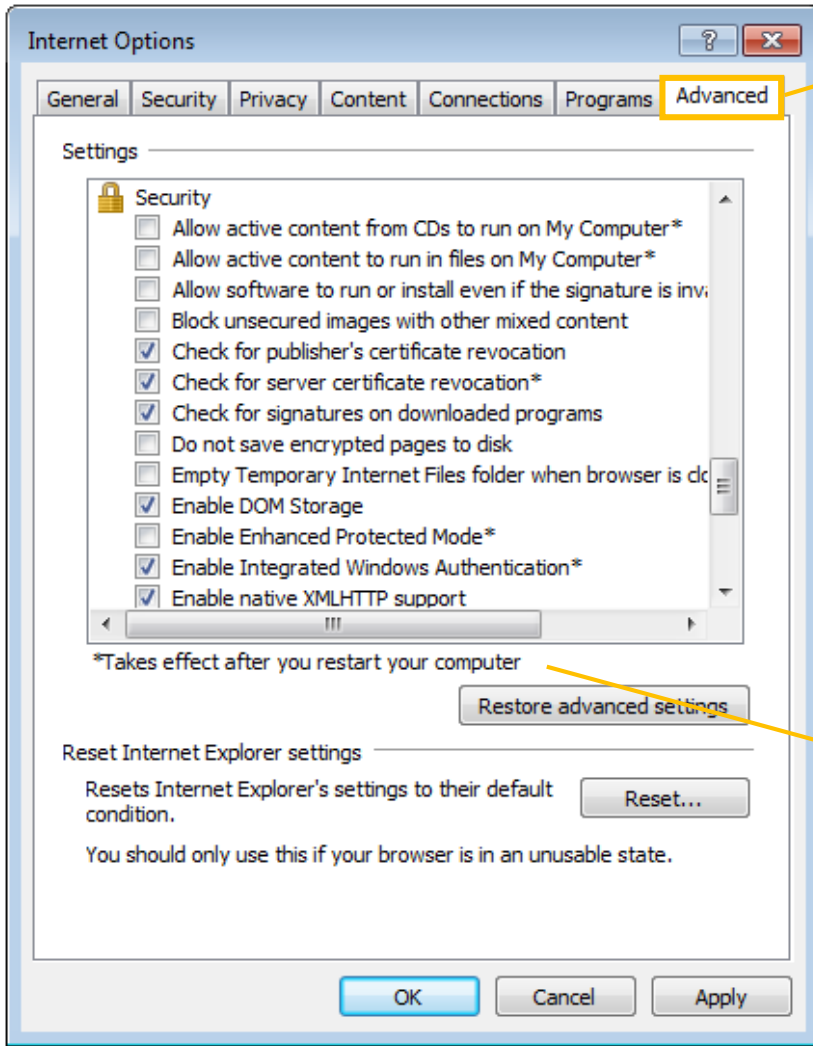
Select the 'Content' tab... 1

Click 'Settings'... 2

Choose the auto-complete settings that suit your role. 3

Click 'Delete AutoComplete history'. 4

# Internet Options – Advanced



Select the 'Advanced' tab...

1

Scroll down to 'Security'. Consult your administrator for the settings required in your organisation.

2

Restart your computer to make sure that all new settings take effect.

3

